



Viola Interlude 2020 graphite on paper 33 x 23 ½ inches

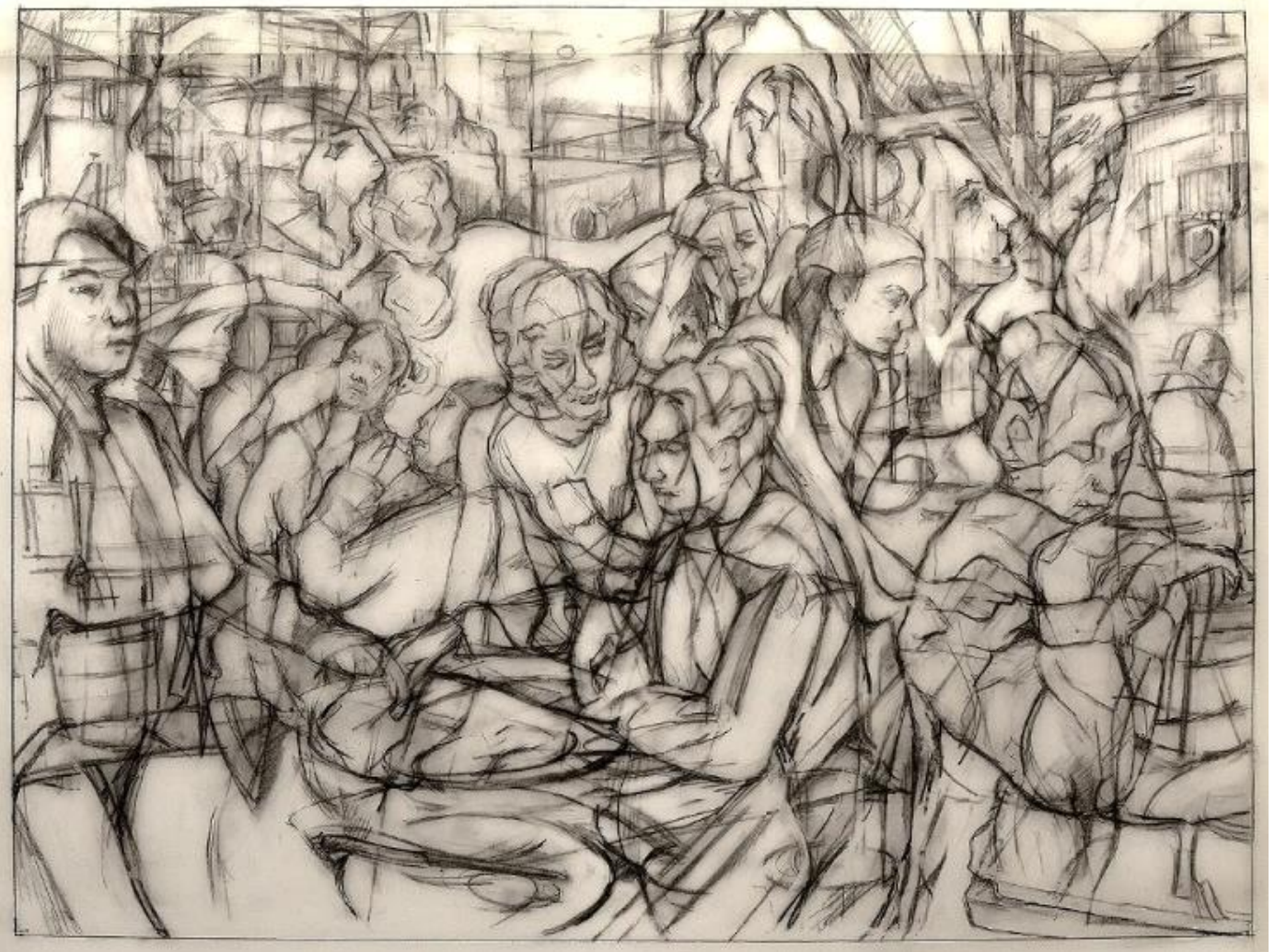
Clive Head; Inventory of 101 Selected Drawings Part Two



Contra Passo Con Gli Elefanti 2019 graphite on tracing paper 17 ½ x 16 inches



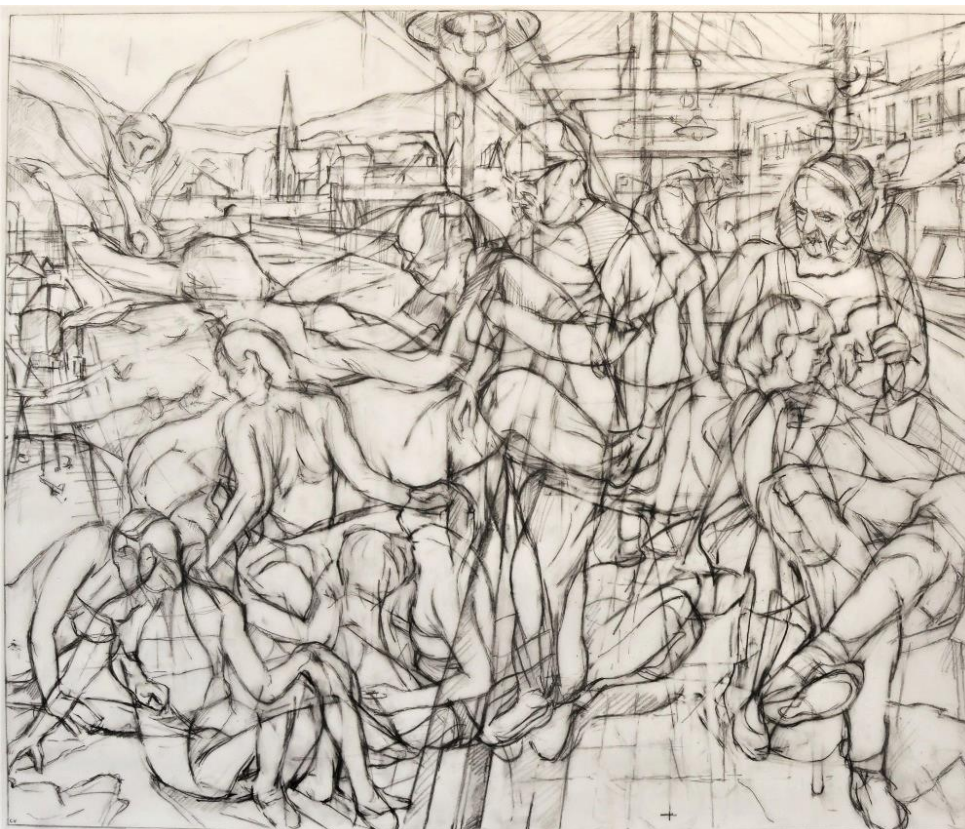
The Morning Shift After the Shower 2019 graphite on tracing paper 13 $\frac{3}{4}$ x 25 $\frac{1}{2}$ inches



LES Sardanapalus 2019 graphite on tracing paper 16 x 23 $\frac{1}{2}$ inches



The Flaneurs of Broadway 2019 graphite on tracing paper 20 x 17 ¾ inches



To Henry Koerner with Love graphite on tracing paper 16 ¾ x 20 inches



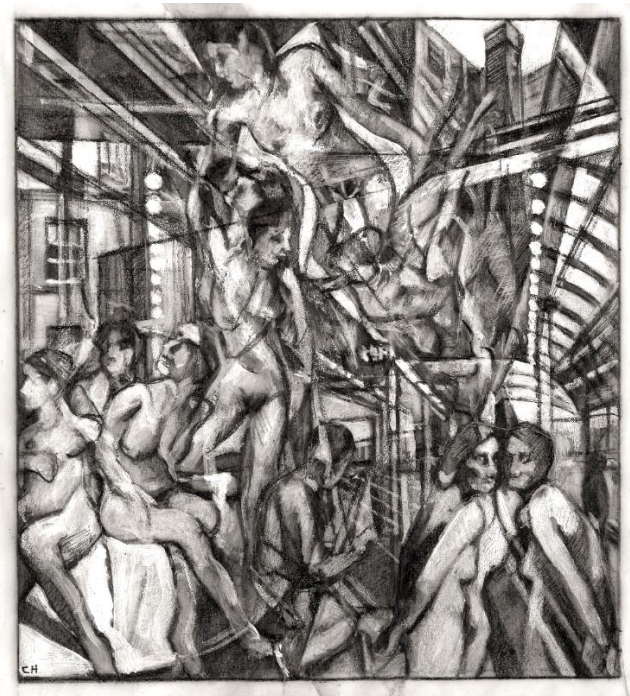
Drawing for Blue Pole Dance 2019 graphite on tracing paper 12 ½ x 21 inches



Drawing for Wonder Woman 2018 graphite on tracing paper 8 ½ x 5 inches



Drawing for My Coney Island 2018 graphite on tracing paper 16 x 11¼ inches



Her Artist's Cut 2018 graphite and acrylic on tracing paper 5 ½ x 5 inches



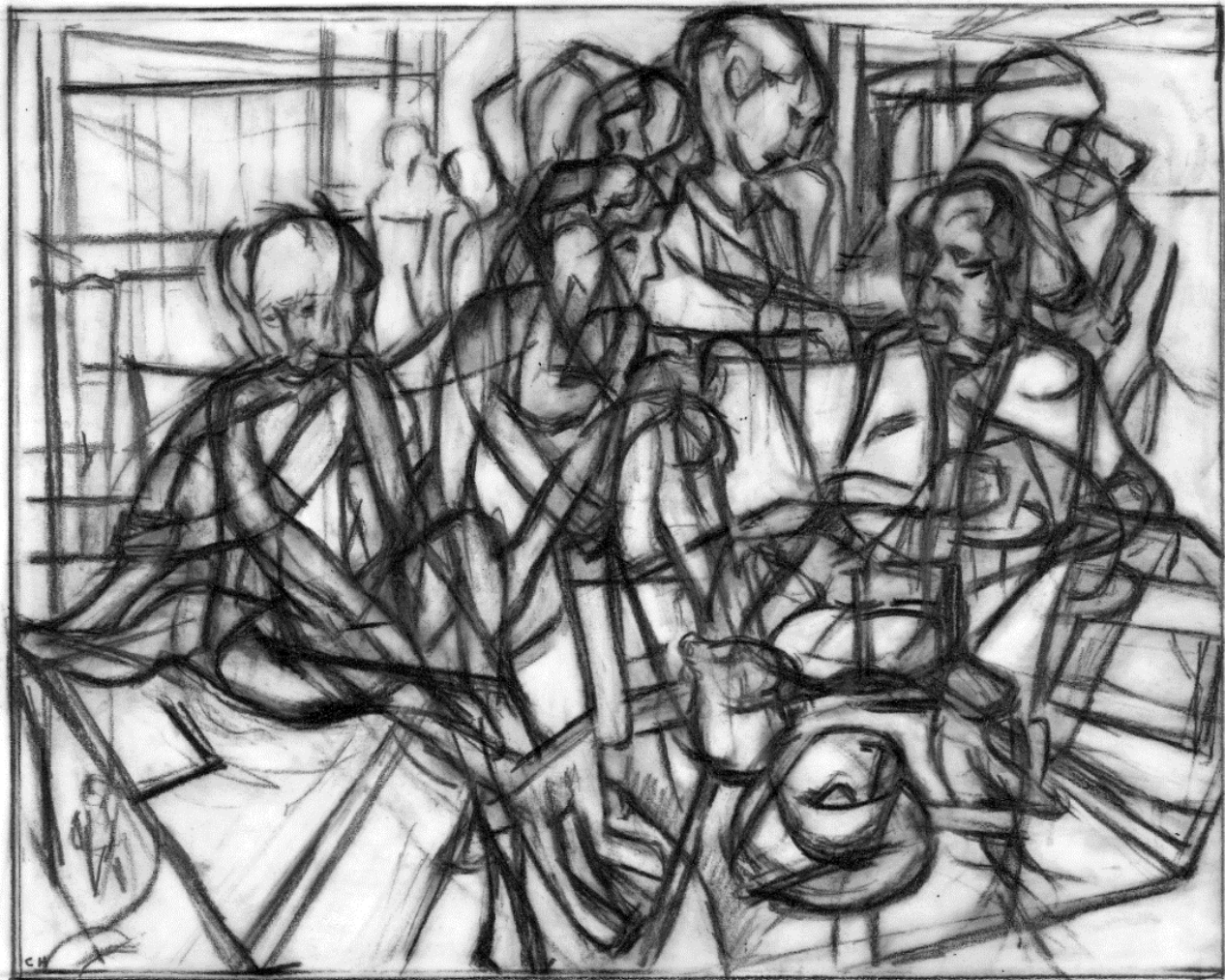
Studies in German 2018 acrylic on paper 33 x 23 ½ inches



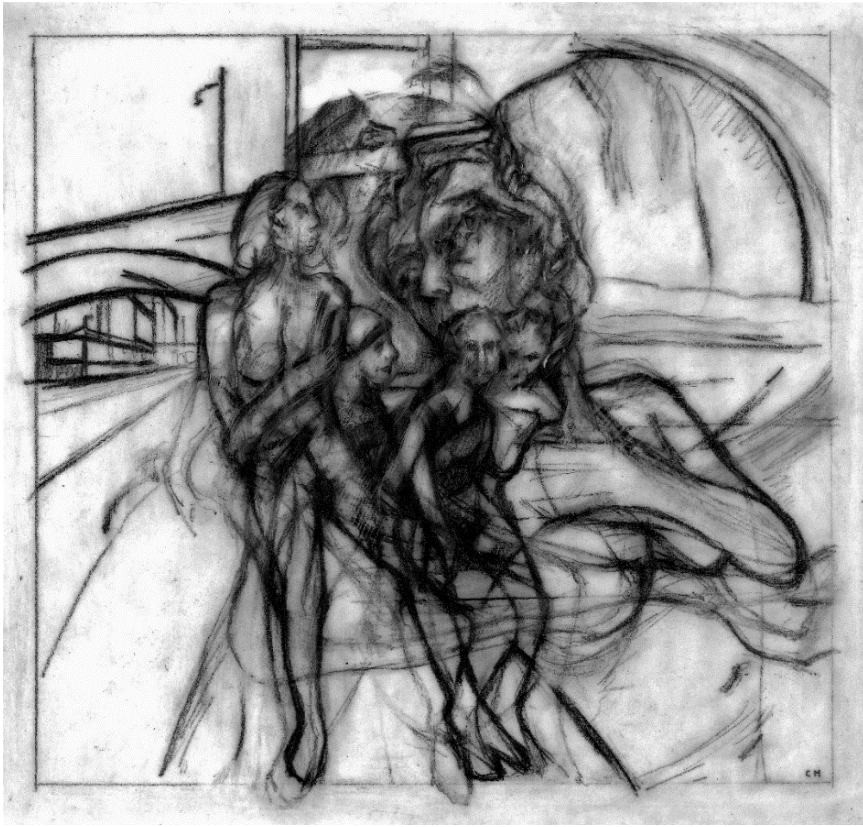
After Balham Falls 2017 hard ground etching (edition of 30) 17 x 23 ¾ inches



Drawing for To The Silence of Tiresias 2016 graphite and acrylic on tracing paper 5 x 4 ½ inches
Drawing for Siddal's Ferry 2016 graphite and acrylic on tracing paper 6 x 4 inches



Drawing for To Wait as Balham Falls 2016 graphite on tracing paper 6 x 7 ½ inches



A Little Space for the Deities graphite on tracing paper 6 ¾ x 7 inches



Drawing for Thinking About Georges Braque 2012 graphite and acrylic on tracing paper 4 ¼ x 5 ¾ inches



Arcade 2012 hard ground etching (edition of 30) 36 ¾ x 52 ¼ inches



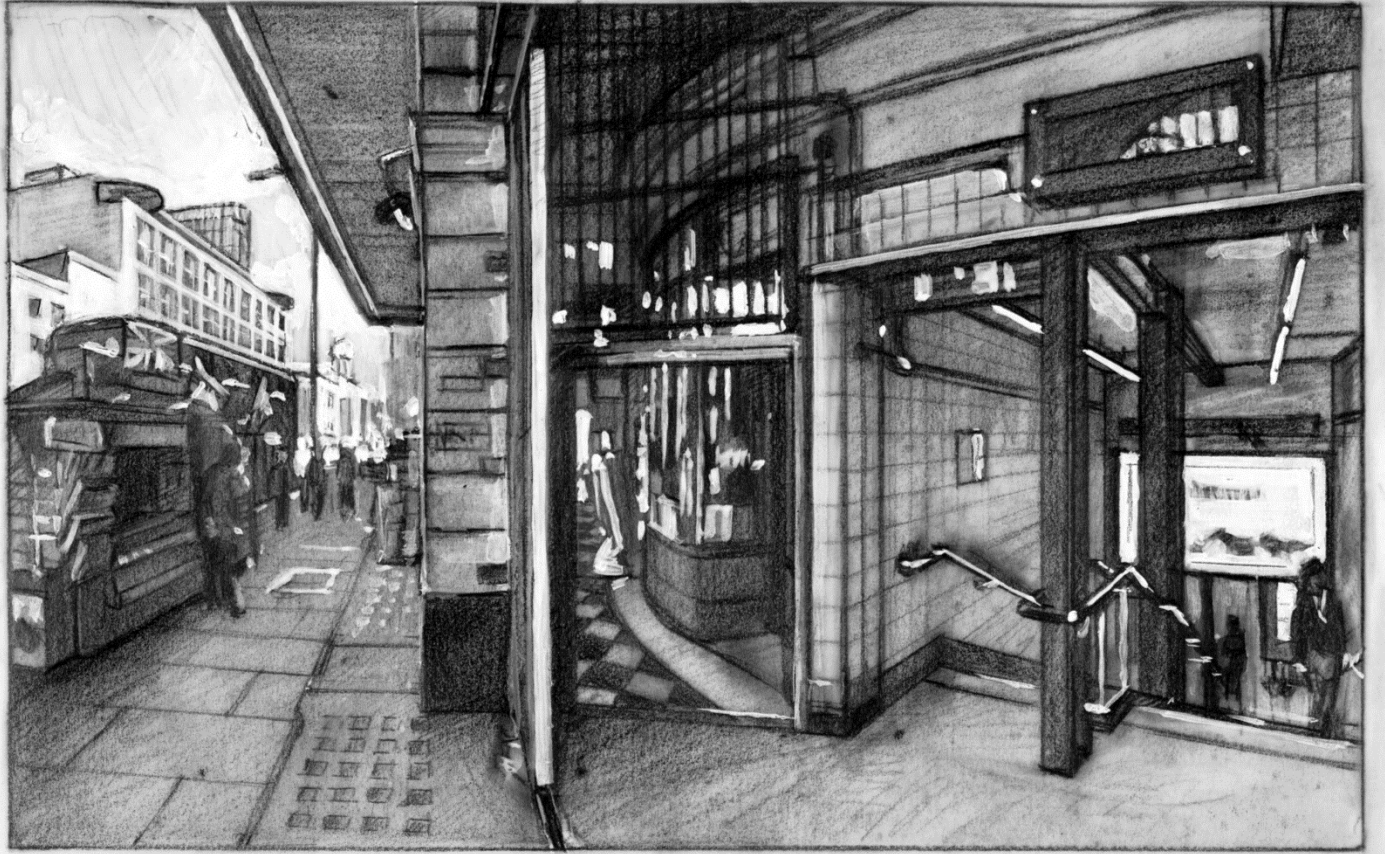
Terminus 2012 hard ground etching (edition of 30) 26 x 53 ½ inches



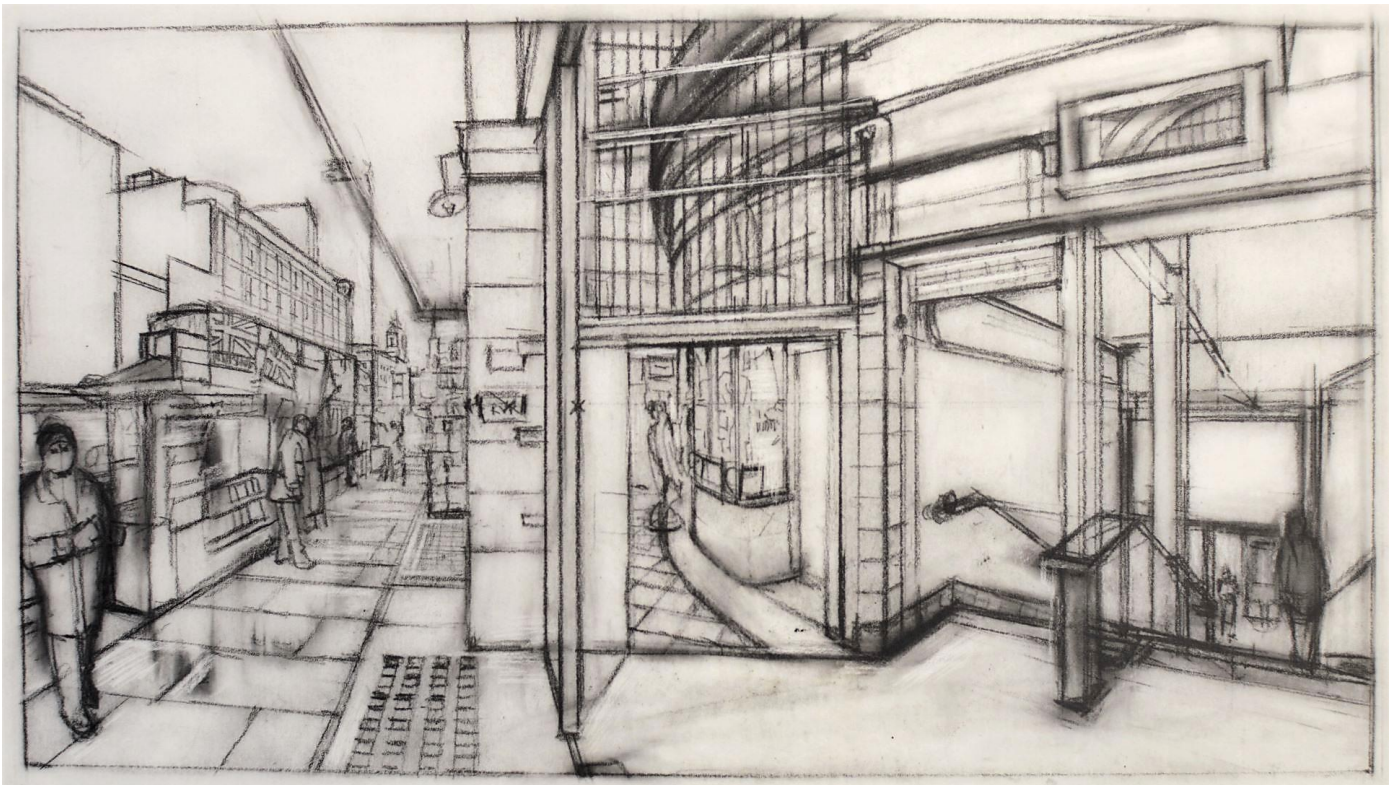
Drawing for Artist Descending a Staircase 2011 graphite and acrylic on tracing paper 5 ¼ x 7 inches



Drawing for Leicester Square 2011 graphite and acrylic on tracing paper 4 ½ x 8 ½ inches



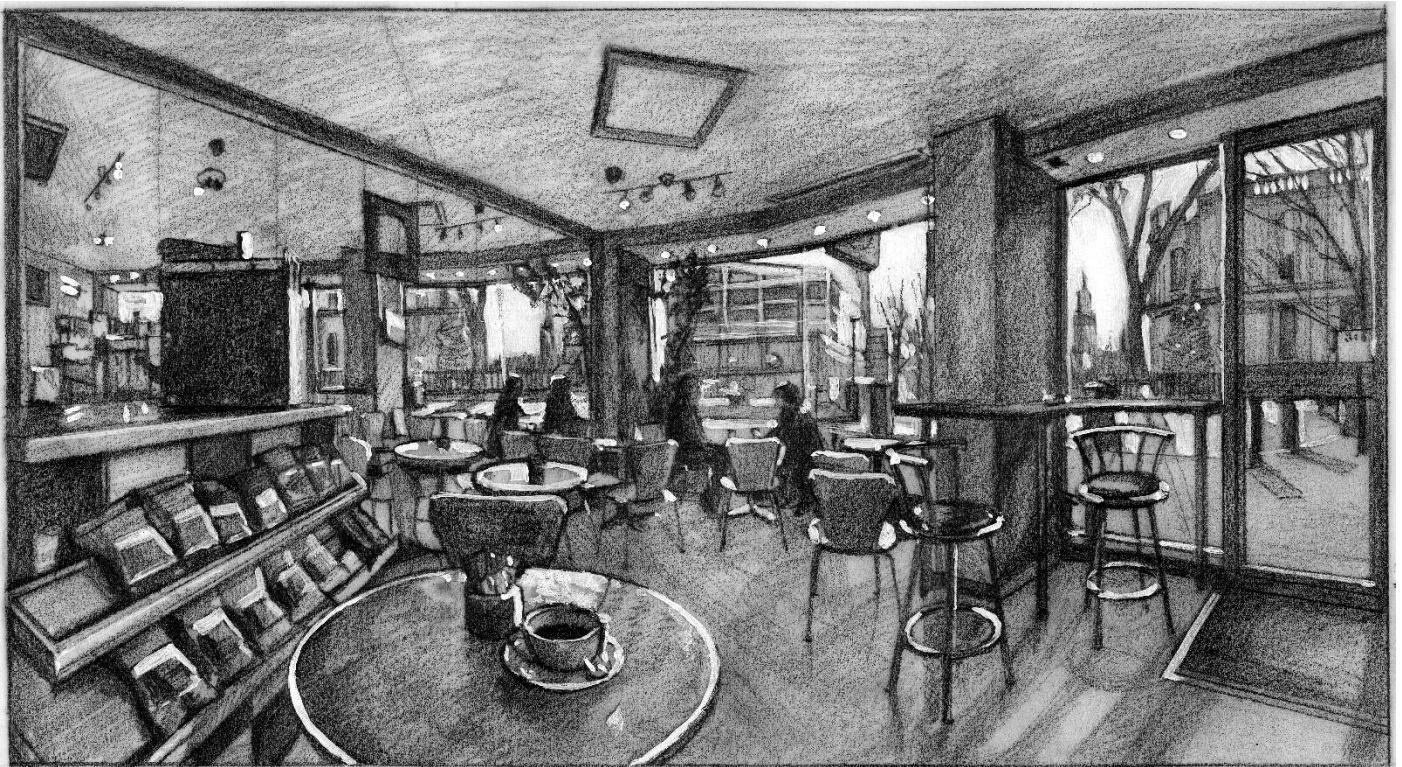
Drawing for Victoria Underground 2010 graphite and acrylic on tracing paper 4 ½ x 7 ½ inches



Victoria with Donor 2010 graphite on tracing paper 4 ½ x 8 ½ inches



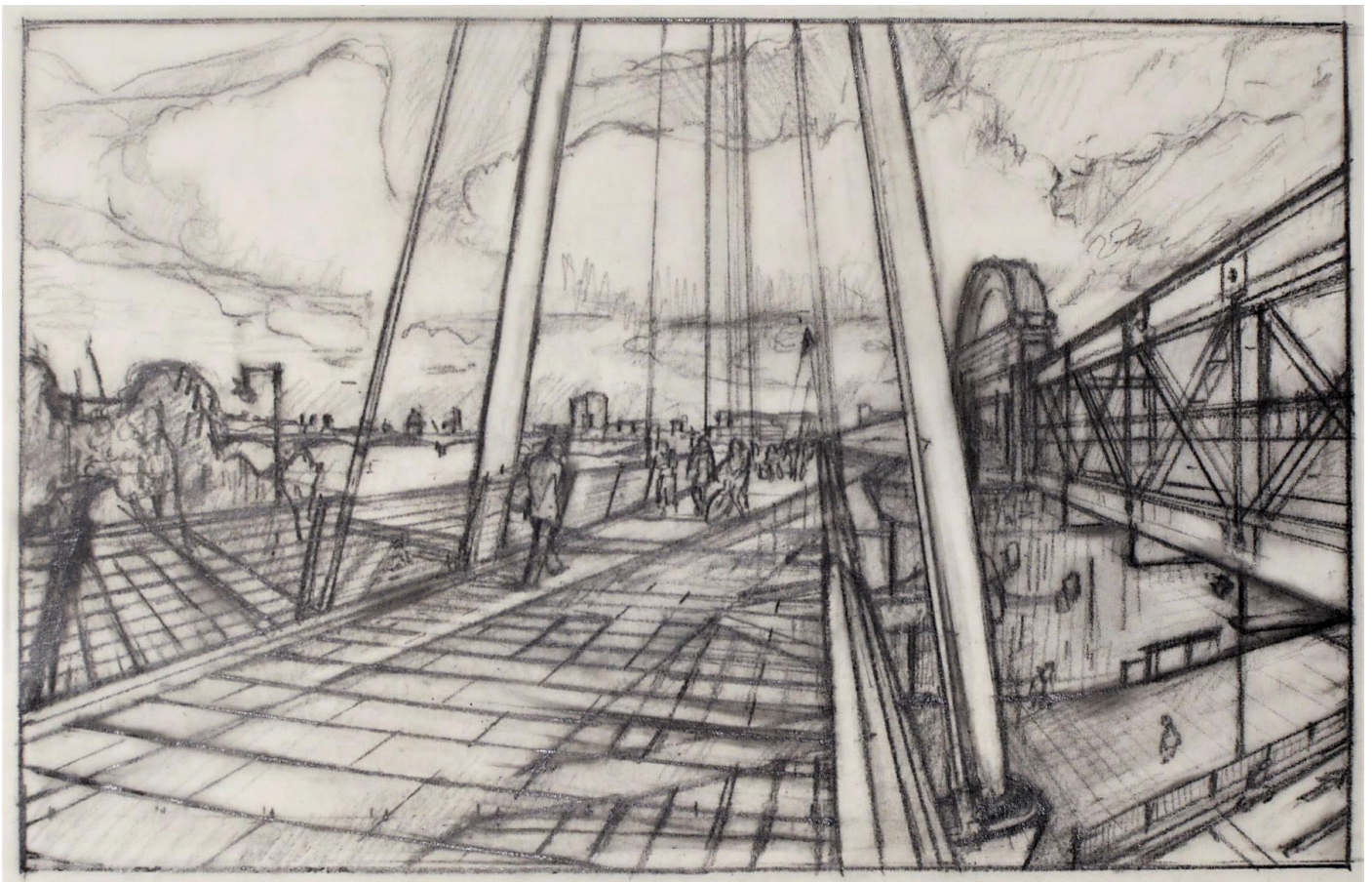
Drawing for Sun Setting Over Victoria 2010 graphite and acrylic on tracing paper 4 ½ x 7 ¼ inches



St. Paul's 2010 graphite and acrylic on tracing paper 5 x 9 inches



Drawing for St. Paul's 2010 graphite on tracing paper 5 x 9 inches



Drawing for Skyline 2010/22 graphite on tracing paper 4 ½ x 6 ¼ inches



Drawing from Armin's Roof 2009 graphite and acrylic on tracing paper 4 ½ x 7 inches



Drawing for Inverness Terrace

Chris Head 2006

Drawing for Inverness Terrace 2006 graphite on tracing paper 4 ½ x 6 ¾ inches



Drawing for 'Marylebone Road'

Chris Head 2006

Drawing for Marylebone Road 2006 graphite on tracing paper 3 ¼ x 4 ¼ inches



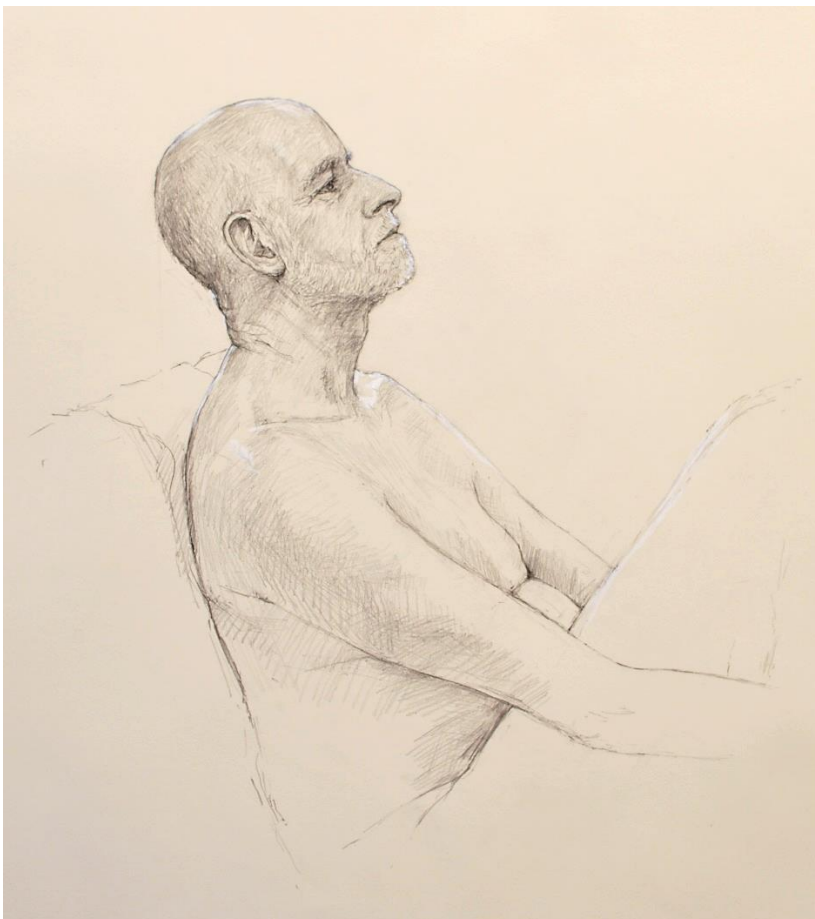
Drawing for 'New York Harbour'

Chris Head 2006

Drawing for New York Harbour 2006 graphite and acrylic on tracing paper 3 x 5 inches



Drawing for Rain Clouds over the Moskva River 2005 graphite on tracing paper 3 ¾ x 5 ¾ inches



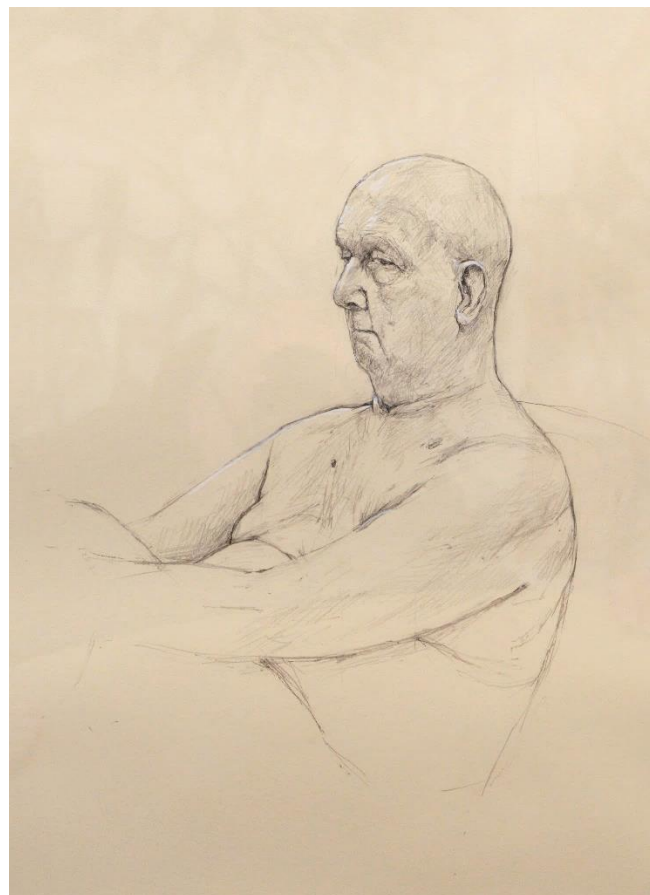
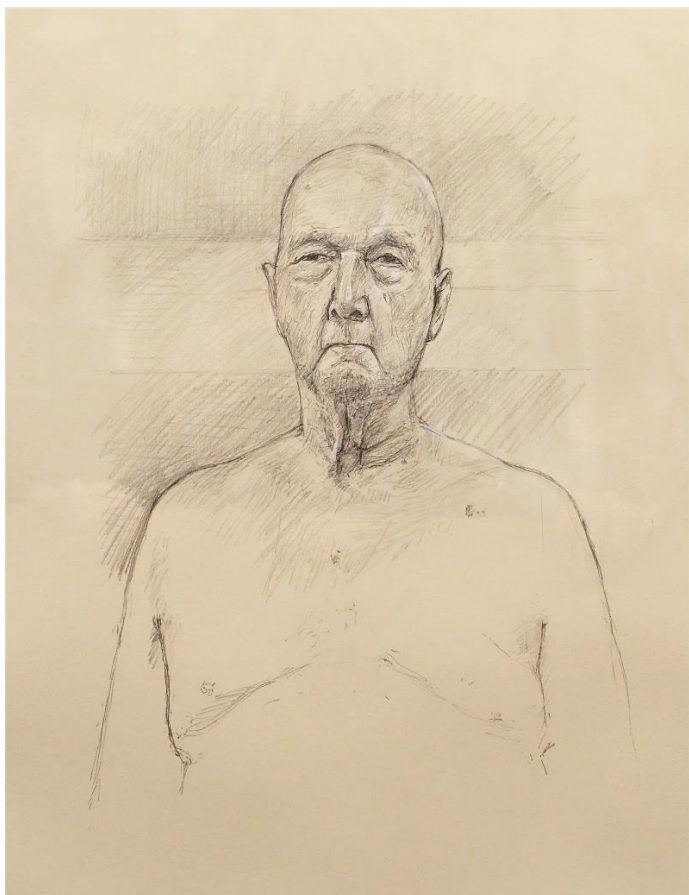
Saturday 2008 graphite and chalk on ivory coloured paper, full sheet (33 x 23 ½ inches)



Rachel 2007 graphite on ivory coloured paper, each drawn within a full sheet of cartridge (33 x 23 ½ inches)



For John Everett, with Love 2007 graphite on ivory coloured paper, full sheet (33 x 23 ½ inches)



A Scarborian 2008 graphite on ivory coloured paper, each drawn within a full sheet of cartridge (33 x 23 ½ inches)



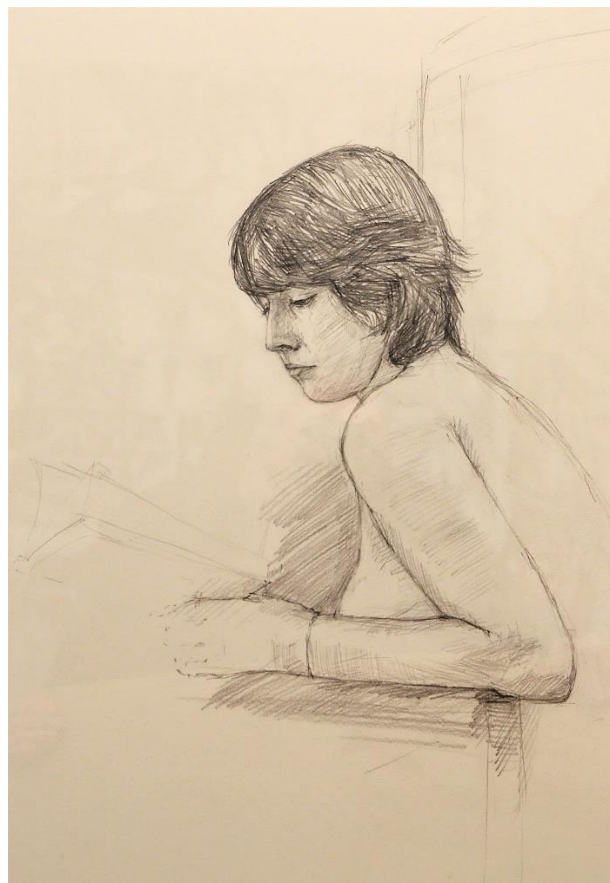
Portrait of Michael Paraskos 2008 graphite and chalk on ivory coloured paper, full sheet (33 x 23 ½ inches)



Egyptian 2008 graphite and chalk on ivory coloured paper, full sheet (33 x 23 ½ inches)



Joe's Girl 2008 graphite and chalk on ivory coloured paper, full sheet (33 x 23 ½ inches)



Briony 2007/8 graphite and chalk on ivory coloured paper, each drawn within a full sheet of cartridge (33 x 23 ½ inches)



The Drama Student 2007 graphite on ivory coloured paper, full sheet (33 x 23 ½ inches)

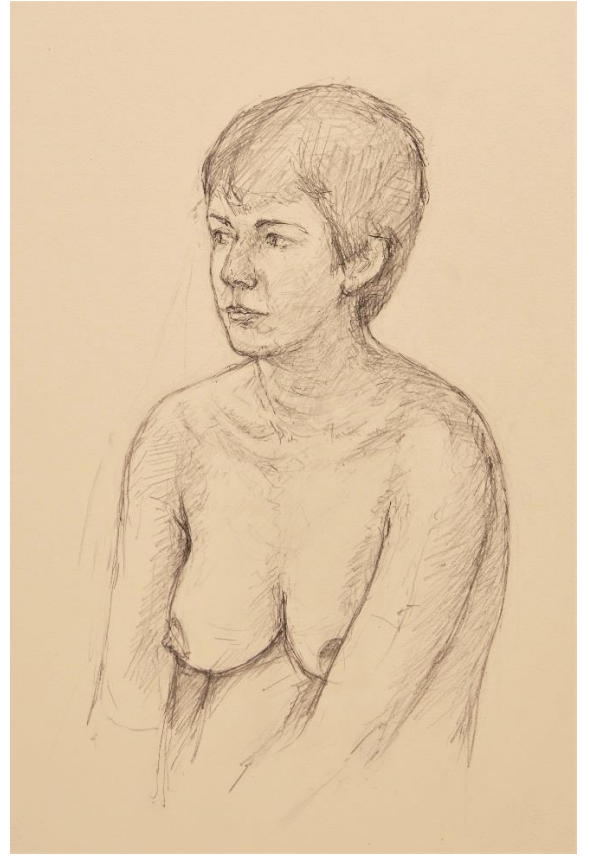
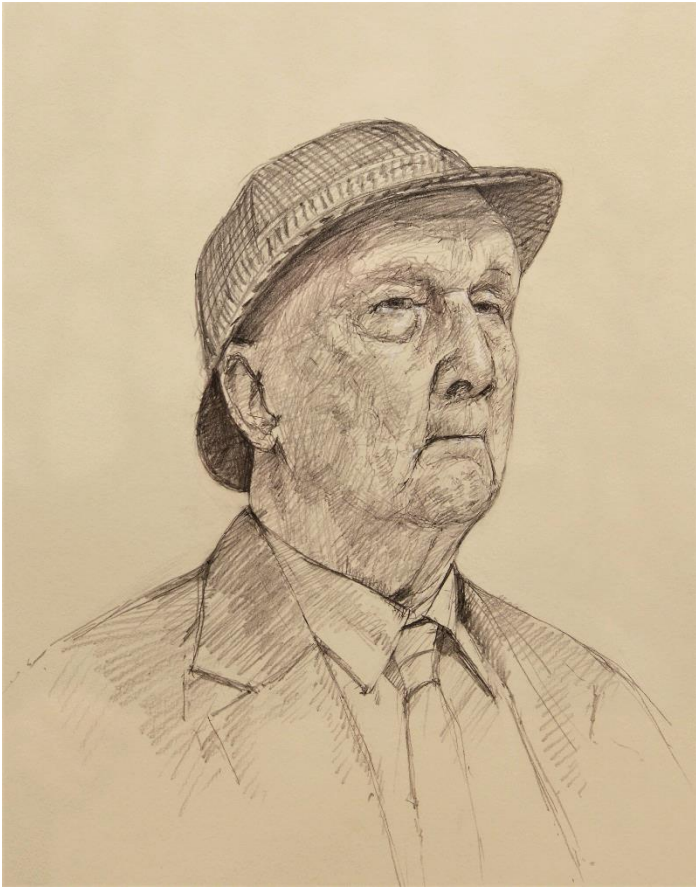


Head on Knees 2007 graphite on ivory coloured paper, drawn within a full sheet of cartridge (33 x 23 ½ inches)

The Bored Model 2007 graphite on ivory coloured paper, drawn within a full sheet of cartridge (33 x 23 ½ inches)



With Cross 2007 graphite on ivory coloured paper, drawn within a full sheet of cartridge (33 x 23 ½ inches)



Pork Pie Hat 2007 graphite on ivory coloured paper, drawn within a full sheet of cartridge (33 x 23 ½ inches)
New Hair Cut 2007 graphite on ivory coloured paper, drawn within a full sheet of cartridge (33 x 23 ½ inches)

